



Ny-Ålesund
Research Station
Norway

Ny-Ålesund Research Station

A brief introduction

Norwegian Polar Institute and Kings Bay AS
15th April 2026

Introduction programme

Information about the research station,
and what you as a researcher working
in/from Ny-Ålesund need to know

Target group: Researchers working in Ny-Ålesund, primarily those of you who are new in Ny-Ålesund, but also for those who might want a refresher

Digital meeting twice a year

Duration: 60 min + questions



Ny-Ålesund
Research Station
Norway



Photo: Trine Lise Sviggum Helgerud/NPI

Webpage: <https://nyalesundresearch.no>



Who we are



Norwegian Polar Institute

- Instructed by the Norwegian government to:
 - Lead the research station
 - Implement the research strategy
 - Act as local host
 - Coordinate research



Kings Bay AS

- Land owner and planning responsible for Ny-Ålesund
- Responsible for community operation, maintenance, and development of the research station
- Provides shared research infrastructure, RV Teisten and logistics support
- Tasked with preserving the cultural heritage



Agenda

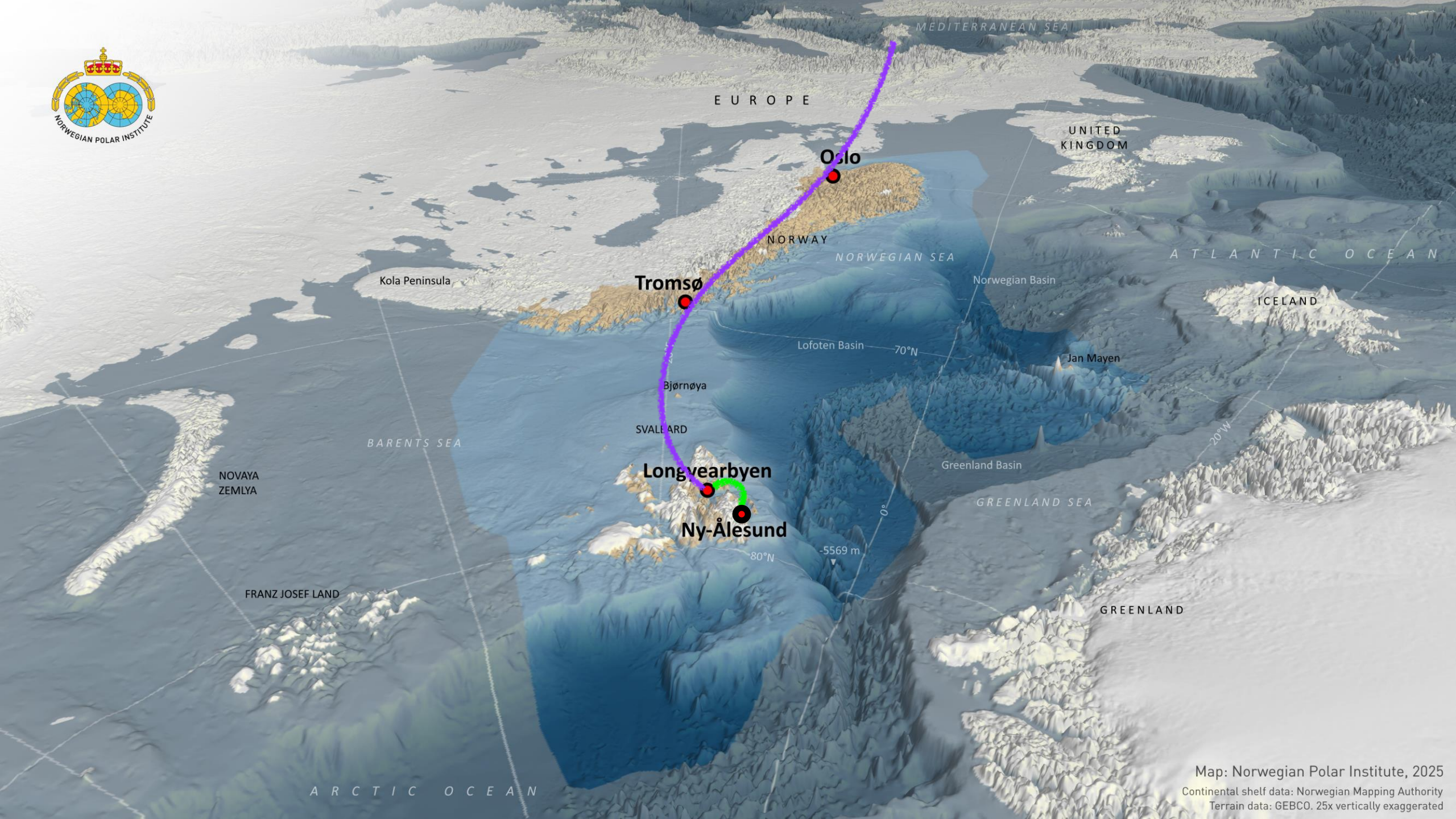
1. Ny-Ålesund Research Station
 2. The Ny-Ålesund Flagship Programmes
 3. Essential Systems and Tools
 4. Research Infrastructure and Facilities in Ny-Ålesund
 5. Preparations, Permits, etc. (What you need to do before arrival)
 6. What to Expect when in Ny-Ålesund
 7. Safety
- Questions & Answers





Part I

Ny-Ålesund Research Station

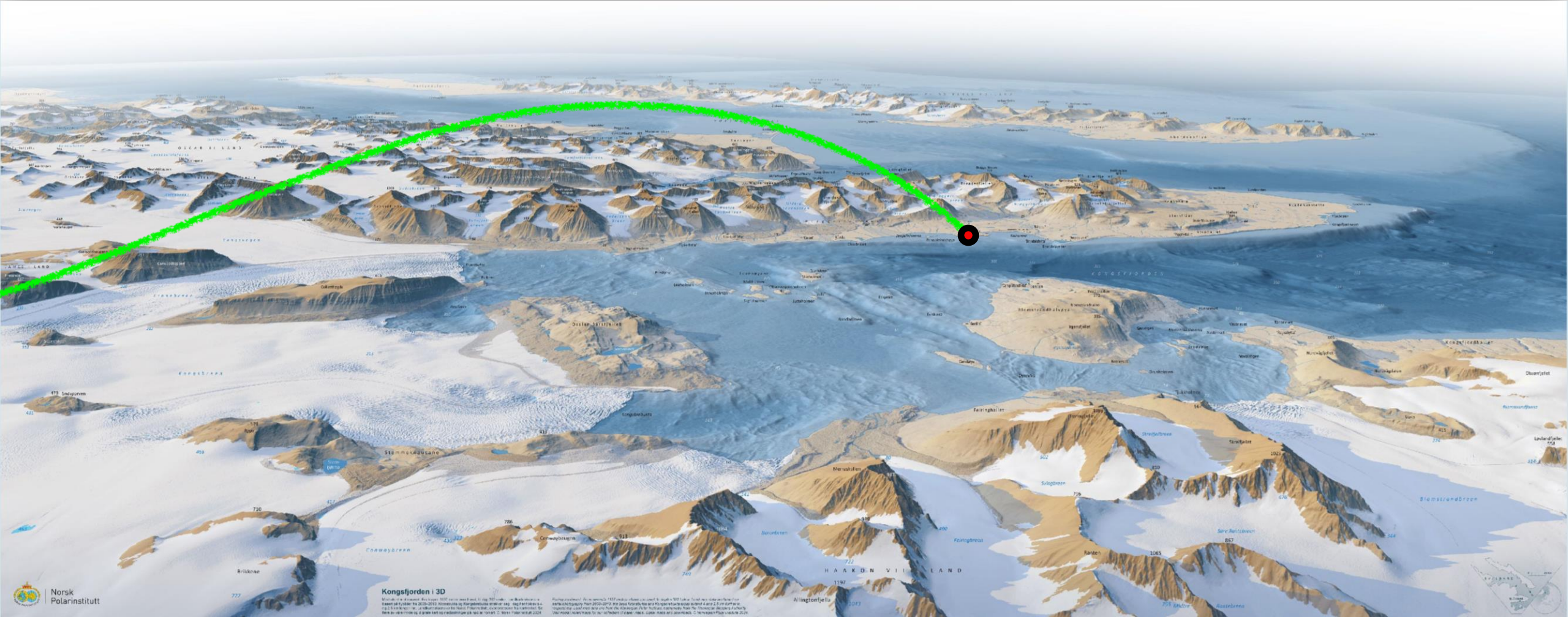


Map: Norwegian Polar Institute, 2025

Continental shelf data: Norwegian Mapping Authority

Terrain data: GEBCO. 25x vertically exaggerated

Ny-Ålesund Research Station



Ny-Ålesund Research Station

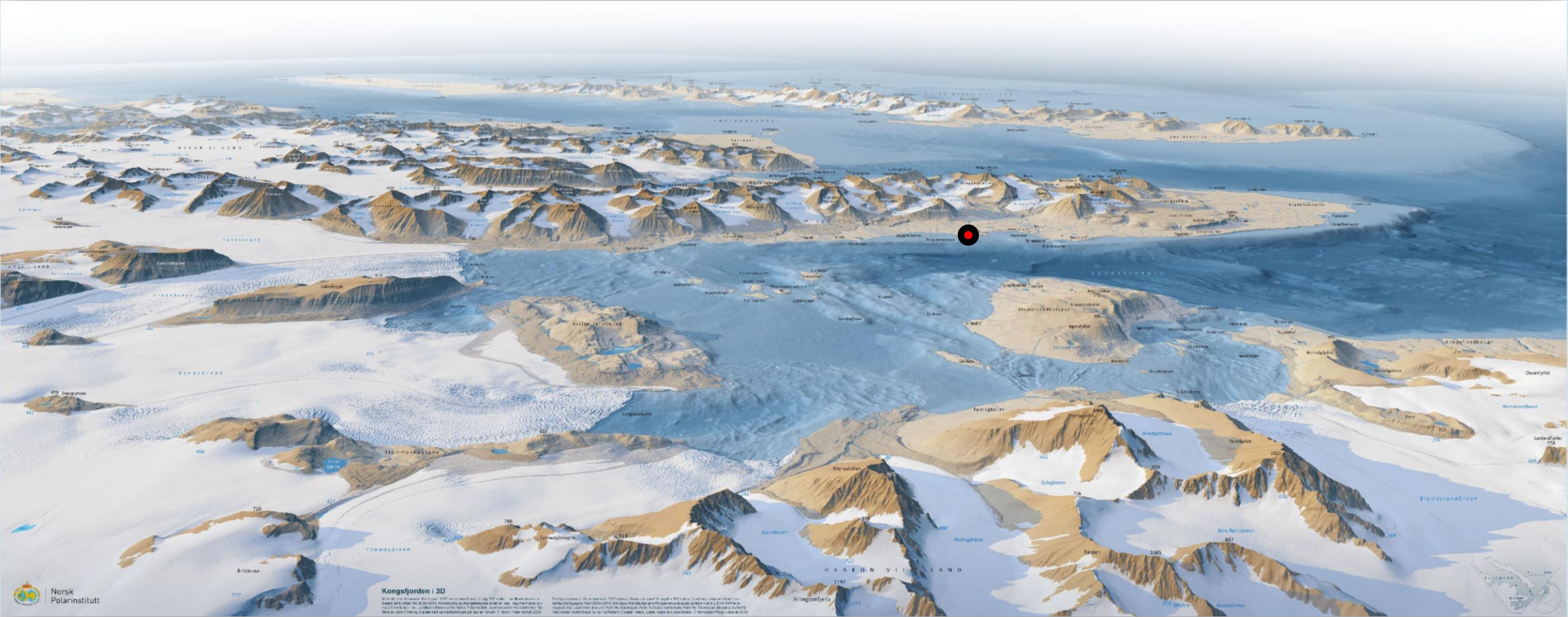




Photo: Gør Gotaas, Norwegian Polar Institute





Norwegian Ministry
of Justice and Public Security

Meld. St. 32 (2015–2016) Report to the Storting (white paper)

Svalbard

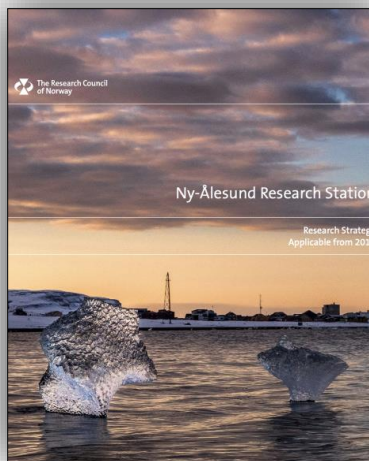


Norwegian Ministries

Strategy

Strategy for research and higher education in Svalbard

Svalbard – top of the world for knowledge of global significance



The Research Council
of Norway

Ny-Ålesund Research Station

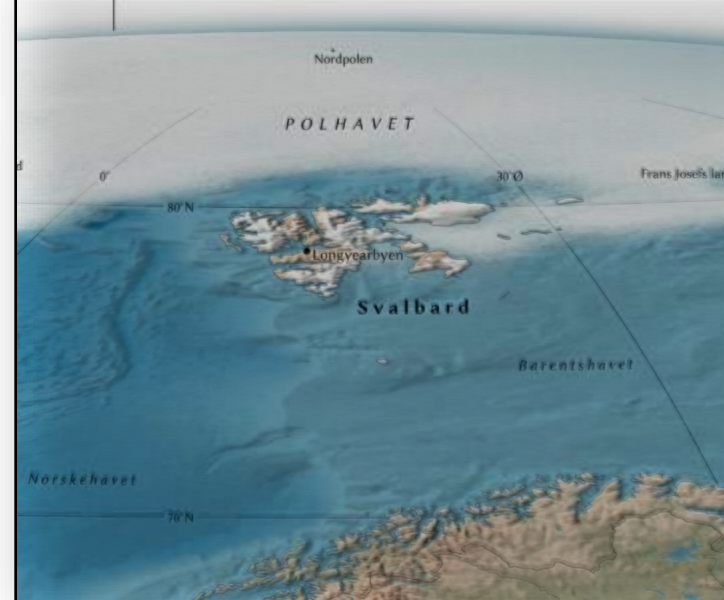
Research Strategy
Applicable from 2019



Norwegian Ministry
of Justice and Public Security

Meld. St. 26 (2023–2024) Report to the Storting (white paper)

Svalbard

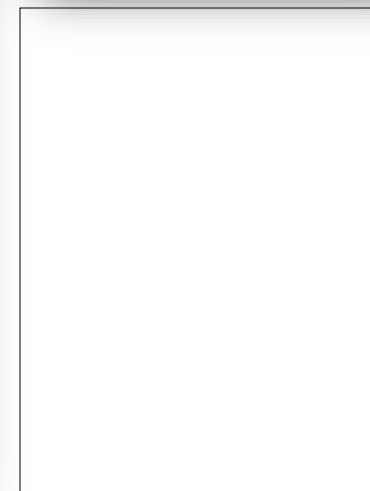


Ministry of Education and Research

Strategy

Strategy for Research and Higher Education in Svalbard

Svalbard – top of the world for knowledge of global significance



Objectives for research and higher education in Svalbard

The Government's objectives for research and higher education in Svalbard are set out in the Svalbard White Paper:

- Research and higher education shall be key elements of Norwegian activity in Svalbard in the years to come.
- Svalbard shall be further developed as a platform for international research, higher education and environmental monitoring. The archipelago's infrastructure and unique research possibilities shall be exploited even better than they are at present. The infrastructure must be supplemented with measures that further strengthen Svalbard's position in international knowledge development.
- Norway shall be a key actor in the development of knowledge in and about Svalbard, not just a facilitator. A professional leading role must be ensured, in particular through the professional standing and quality of Norwegian polar research.
- All activity shall be in accordance with an overriding consideration of the environment. Research and higher education in climate and the environment are natural focus areas, and the research itself relies on ensuring that the area remains as unaffected as possible by local impact.



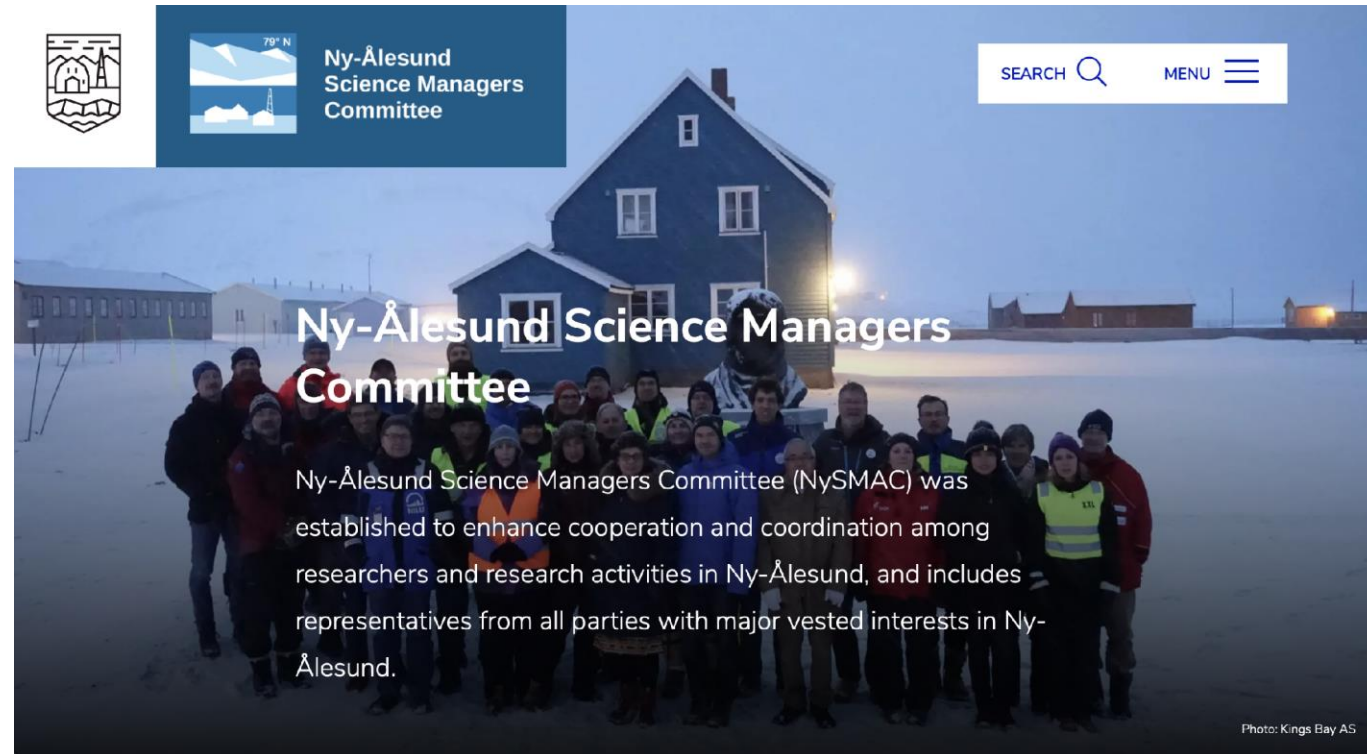


- World class **Arctic natural science**
- Make use of **Ny-Ålesund's unique qualities** as a pristine natural science laboratory
- Research activity should have the **lowest possible environmental impact**
- Further develop the research infrastructure so that it is even more **thematically based** than today, and promotes even more extensive cooperation
- Norwegian Polar Institute in close collaboration and dialogue with **NySMAC**, SIOS, SSF and Kings Bay AS



Ny-Ålesund Science Managers' Committee - NySMAC

- Established in 1994
- Cooperation between institutions engaged in research and monitoring
- 18 members, 4 observers
- Secretariat hosted by the Norwegian Polar Institute



An aerial photograph of a rugged, mountainous landscape in a high-latitude region. The foreground shows a snow-covered slope with some rocky outcrops and a small structure. In the middle ground, a wide, dark blue fjord or bay stretches across the scene, surrounded by dark, rocky terrain. In the background, a range of snow-capped mountains extends across the horizon under a clear, light blue sky. The overall scene is serene and majestic.

Part II

The Ny-Ålesund Flagship Programmes

Ny-Ålesund flagship programmes

- Network open for all
- Annual meeting places to share information
- Collaboration and coordination
- Give advice on infrastructure development

More information on flagships:
<https://nyalesundresearch.no/research-and-monitoring/>

Sign up to the newsletter
<https://nyalesundresearch.no/newsletter/>

Atmosphere



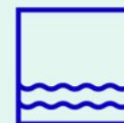
Terrestrial Ecosystems

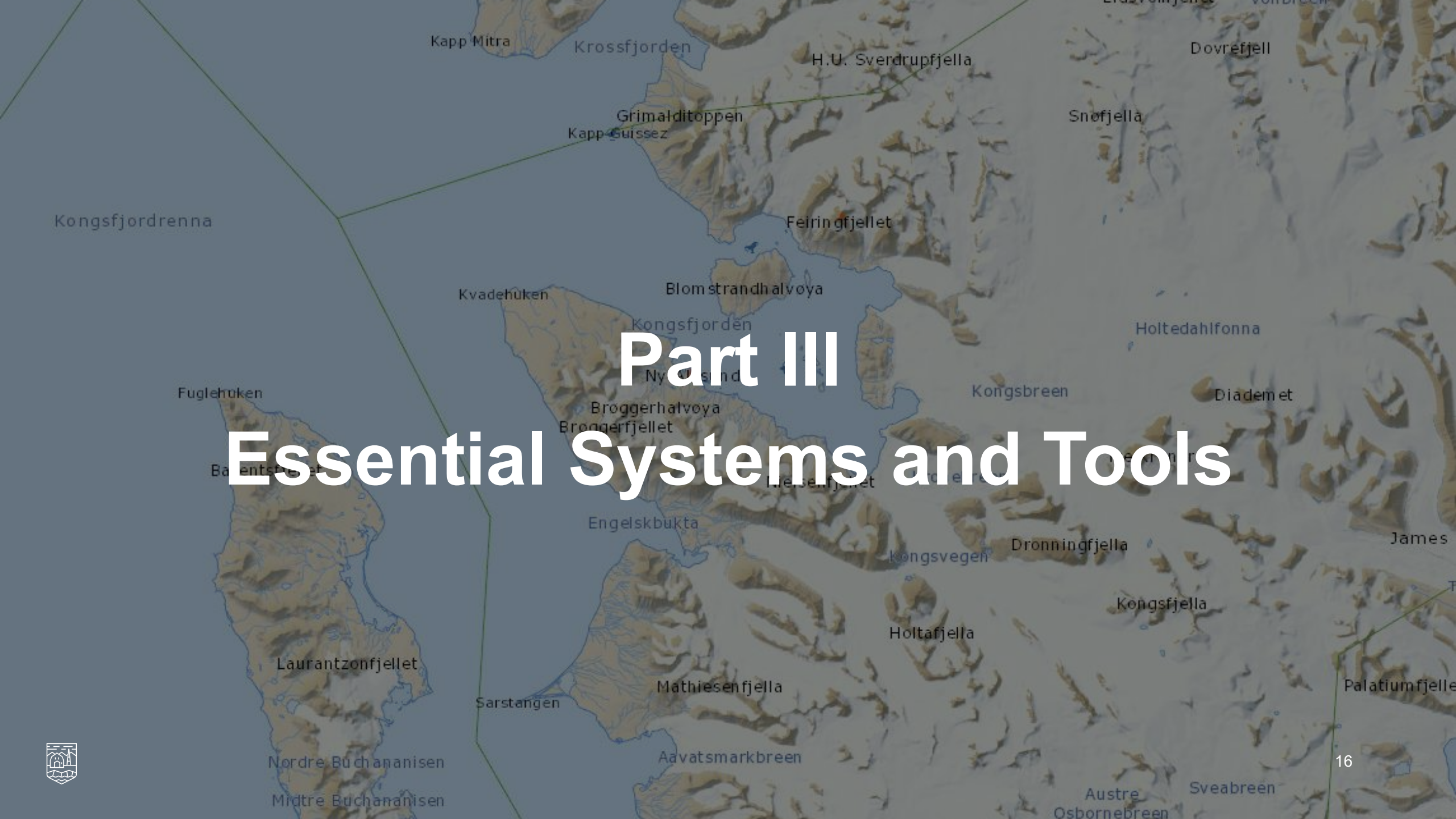


Glaciology



Kongsfjorden System





The background is a topographic map of a mountainous region, likely in Antarctica, showing various peaks, fjords, and ice formations. The map is rendered in shades of brown, tan, and blue. Numerous geographical features are labeled with text, including Kapp Mitra, Krossfjorden, H.U. Sverdrupfjella, Dovrefjell, Grimalditoppen, Kapp Guissez, Snøfjella, Feiringfjellet, Kongsfjordrenna, Kvadehuken, Blomstrandhalvøya, Kongsfjorden, Ny Østland, Holtedahlfonna, Fuglehuken, Broggerhalvøya, Broggerfjellet, Kongsbreen, Diadem et, Engelskbukta, Dronningfjella, James, Kongsvegen, Holtafjella, Kongsfjella, Laurantzonfjellet, Mathiesenfjella, Sarstangen, Aavatsmarkbreen, Nordre Buchananisen, Midtre Buchananisen, Austre Osbornebreen, and Sveabreen. The text is in a light blue or grey color, matching the map's color scheme.

Part III

Essential Systems and Tools



The Research in Svalbard Portal

Online portal where you:

- Register your projects
- Apply for permissions from the Governor on Svalbard
- Book your stay in Ny-Ålesund
- Serves as a tool for information about other projects

<https://researchinsvalbard.no>

The screenshot shows the 'Research in Svalbard Portal' interface. At the top, there is a dark blue header with the portal name, a user profile for 'Ingrid Kjerstad', and a search bar. Below the header, the project 'Seabird Populations Monitoring (SEAPOP)' is displayed with its RIS ID '361' and an 'Active' status. A navigation bar contains three tabs: 'PROJECT INFO', 'APPLICATIONS & REPORTS', and 'BOOKING REQUESTS', all of which are circled in red. The main content area is divided into several sections: 'Funding & Affiliations' (listing 'Arctic Field Grant (AFG)' and 'Field work'), 'Discipline' (listing 'Marine biology' and 'Terrestrial biology'), 'Project Keywords' (listing 'Biosphere', 'Ecological dynamics', and 'Community dynamics'), 'Project Period' (01 Jan 2005 - 31 Aug 2030), 'Objectives' (describing the SEAPOP programme), 'Plan for data collection, sharing and management', 'Associated Projects', 'Collaborating Projects' (with a link to RIS ID 1158), 'Collaboration Opportunities', and 'Projects Nearby' (with links to RIS IDs 1855, 10296, and 10341).



Maps – 1

Interactive themed atlas – Svalbardkartet

<https://svalbardkartet.npolar.no>

- Rich dataset of environmental data
- Dedicated layer showing Ny-Ålesund Research Objects (GiS-system)

New visualisation via

<https://nyalesundresearch.no/monitoring-at-ny-alesund-research-station-new/>

- Sort per topic, terms and variables

Svalbardkartet

- Protected Areas
- Traffic and Travel Regulations
- Hunting and Trapping
- Land use
- Cultural Heritage
- Research in Ny-Ålesund**
- Pollution
- Ecology
- Cryosphere
- Geology

NOR ENG

Norsk Polarinstittutt | Copyright Statens kartverk 2007

Browse Topic

- ATMOSPHERE
- BIOSPHERE
- CRYOSPHERE
- BIOLOGICAL CLASSIFICATION
- CLIMATE INDICATORS
- LAND SURFACE

Browse Observed Variable

- (Blank)
- AEROSOL BACKSCATTER
- AMBIENT NOISE
- ABLATION ZONES/ACCUMULATION ZONES
- AEROSOL EXTINCTION
- ANGIOSPERMS (FLOWERING PLANTS)
- ABSORPTION
- AEROSOL OPTICAL DEPTH/THICKNESS
- AQUATIC ECOSYSTEMS
- ACTIVE LAYER
- AEROSOL PARTICLE PROPERTIES
- ARTHROPODS
- AEROSOL ABSORPTION
- ALBEDO
- ATMOSPHERIC EMITTED RADIATION

Browse Term

- AEROSOLS
- ANIMALS/INVERTE...
- ATMOSPHERIC CHEMISTRY
- AIR QUALITY
- ANIMALS/VERTEBR...
- ATMOSPHERIC ELECTRICITY

Observed Variable	Object Name	Owner	Start Year	Data Availability	Monitoring	Part of Network	RIS ID	Object ID
	Wet and Dry Only Precipitation Sampler (WADOS)	Institute for Geosciences and Environmental	2016	N/A	Yes		10515	2496
	Ionospheric Scintillation Monitoring Receiver (GNSS) - rya0p	National Institute of Geophysics and Volcanology (INGV)	2003	https://metadata.iadc.cnr.it/geonetwork/srv/api/records/b606f2a8-7773-4e6a-b081-353c27b10cec	Yes	GNSS Ionospheric Scintillation monitoring network: "eSWua"	3297	2612
	Ionospheric Scintillation Monitoring Receiver (GNSS) - rya1p	National Institute of Geophysics and Volcanology (INGV)	2009	https://metadata.iadc.cnr.it/geonetwork/srv/api/records/5f086d47-e7cc-4d52-88a-11ac84f7b6h	Yes	GNSS Ionospheric Scintillation monitoring network: "eSWua"	3297	2588

1301 Monitored Parameters

47 Institutions with monitoring

17 Countries with monitoring

1950 Monitoring since

65 % Monitoring with available data

61 % Monitoring supporting networks



Maps – 2

- Topographical map of Svalbard –
Topo Svalbard
<https://toposvalbard.npolar.no>
- Offline map of Svalbard that works
on mobile, tablet and PC



Web cameras

- Web cameras (view of Ny-Ålesund from the Zeppelin observatory and from the airport)
 - See <https://nyalesundresearch.no/infrastructures/tools/>

Open data: <https://nyalesundresearch.no/research-and-monitoring/making-research-data-openly-accessible/>



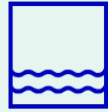
An aerial photograph of the Ny-Ålesund research station in Svalbard, Norway. The station is situated on a coastal plain with various buildings, including a large central structure, several smaller houses, and industrial-looking buildings. There are also storage tanks and a pier extending into the water. The surrounding landscape is mostly flat and brownish, with some patches of green. The water is dark blue.

Part IV

Research Infrastructure and Facilities in Ny-Ålesund

Shared thematic research infrastructure

Kongsfjorden
system



Atmosphere



Glaciology



Terrestrial
ecosystems



Atmospheric research

- Gruvebadet (KB)
- Light sensitive cabin (KB)
- Zeppelin (NPI)
- Climate Change Tower (CCT) (CNR)
- Not booked through RiS → see attachment for detailed instructions on booking process



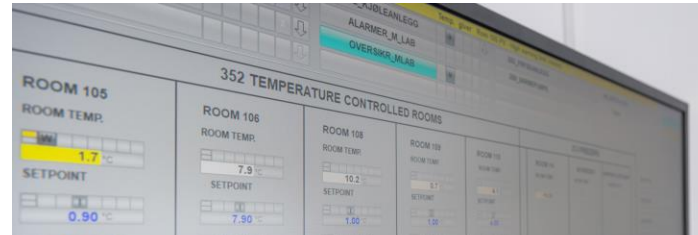
Kongsfjorden system

- Marine Laboratory (KB)
- Research vessel R/V Teisten with captain (KB)
- Polar Circle with captain (NPI)



Marine Laboratory

- Two sea water intakes
- 100 μm , 20 μm filters + UV filtering system
- Temperature controlled rooms (range: 0-15°C)
- Dry- and Wet labs with fume hood
- Non-chemical laboratory
- C-class laboratory for working with radioactive isotopes
- Outdoor platform with possibility for system sea water
- Dive locker and decompression chamber



Full equipment list: <https://kingsbay.no/research>



Marine Laboratory

- Booked through RiS - Check availability @ laboratories@kingsbay.no
- Mandatory Risk assessment and Standard Operating Procedure found at kingsbay.no/research to laboratories@kingsbay.no
- Mandatory safety briefing at the lab – timings at kingsbay.no/research
- Relevant guidelines for all available facilities found at kingsbay.no/research

Questions regarding the Marine lab to laboratories@kingsbay.no



Access to the Fjord

Polarcirkel boat:

- Transport in Kongsfjorden area
- Operation period: May-October
- Special permissions and insurances needed for some areas.
- Limited capacity over the year, book early.



Can be booked through RiS



Access to the Fjord

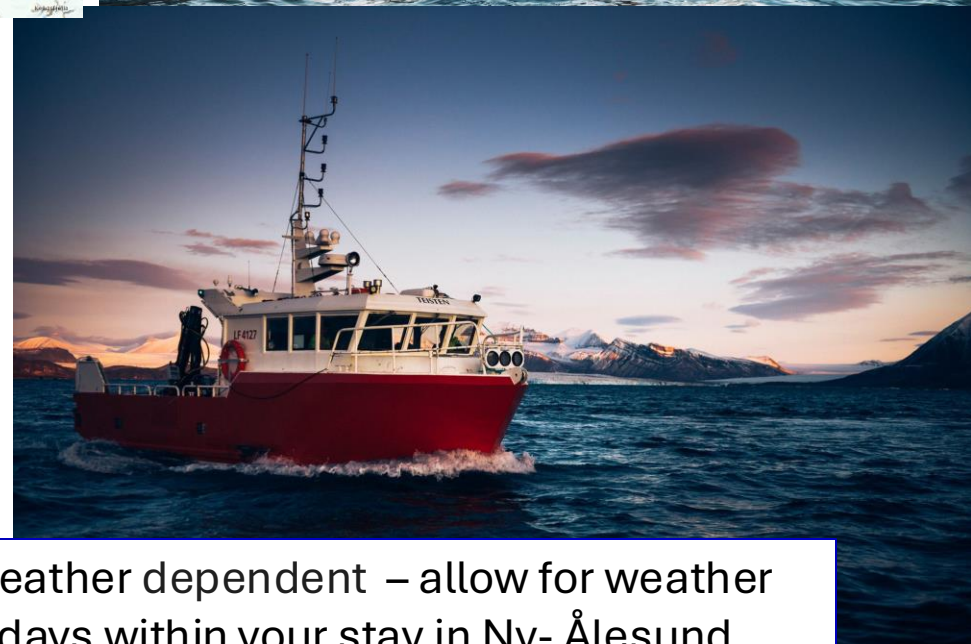
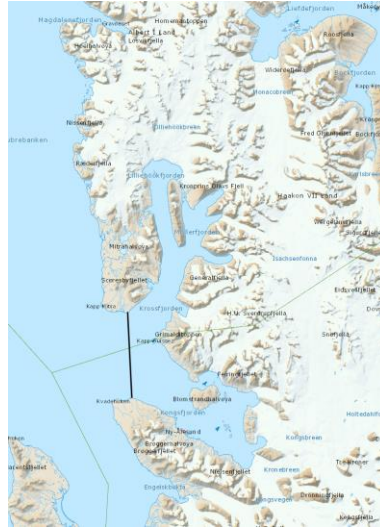
RV Teisten

On- board equipment:

- **RBR CTD / SAIV CTD**
- **WP2 nets 1000 – 500 – 200 microns + 40 microns hand net**
- **Van Veen 1000 cm2 grab / 15 L**

- **Booked through RiS - confirm timings and send in Teisten booking form specifying equipment found at kingsbay.no/research to teisten@kingsbay.no (also linked in RiS)**
- **Risk assessment + SOP to laboratories@kingsbay.no**
- **Note – weekend time is more expensive**

* No winter operations 2026/27 - **2027/28 will have winter operations**



Weather dependent – allow for weather days within your stay in Ny- Ålesund



Terrestrial Ecosystem and Glaciology

Veksthuset

- ▶ Semi wet + wet lab
 - ▶ General lab equipment
 - ▶ MiliQ system
 - ▶ Leica Microscopes
- Booked through RiS - confirm timings and specify equipment found at kingsbay.no/research +
 - Risk assessment + SOP to laboratories@kingsbay.no

Free use out 2026 for Terrestrial Ecosystem and Glaciology projects!



Chemicals, gas, dry ice

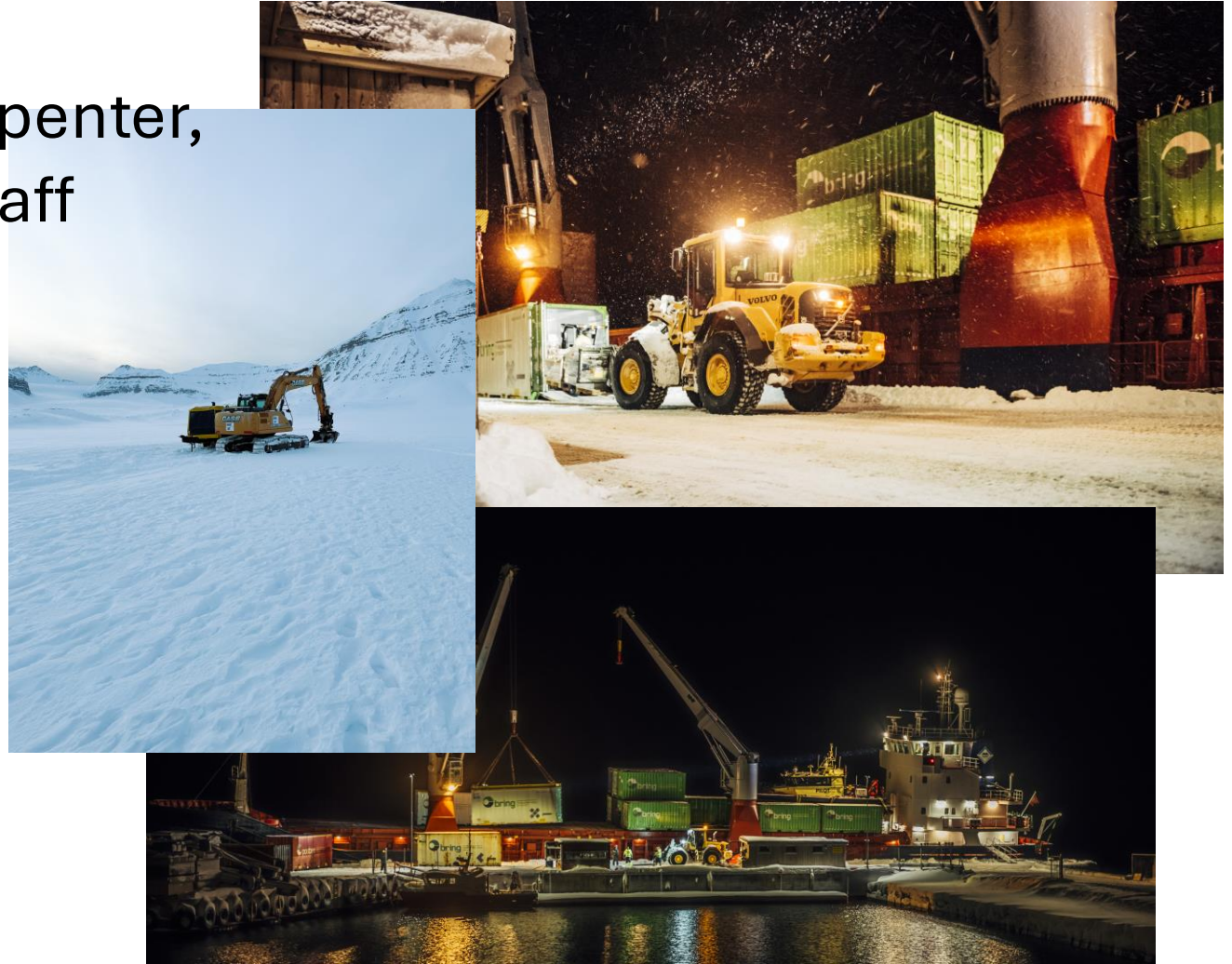
- Chemicals, gas and dry ice orders are booked through the Research in Svalbard (**RiS**) portal
- Communicate your needs and specifications in the lab as soon as possible to laboratories@kingsbay.no - allow enough time to special order and send things!
- Handling of chemicals and chemical waste are important in your risk assessment and SOP – and be aware there is a cost for hazardous chemical waste disposal – more info found under Kings Bay lab terms and conditions and price list at kingsbay.no



Operational and technical support from Kings Bay

e.g., moving heavy equipment, assistance from electrician, carpenter, plumber, or other operational staff

- For larger support jobs: use the **Kings Bay Operational Support and Work Order form** found at kingsbay.no/research
- submit your work order to Kings Bay: to operations@kingsbay.no and research@kingsbay.no
- Cost is estimated by work hours and material/equipment used - you will get a cost estimation beforehand – and final invoice after the work is complete



Cargo and Freight

- Transport from LYR to NyA: **Limited air cargo capacity (20 kg)** and **restrictions** on what can be brought in the plane – **however** – air freight overweight can be requested beforehand with the Kings Bay reception at reception@kingsbay.no but never guaranteed
- Research-related cargo should be sent by **cargo ship**
 - Ship early. Cargo ship about every 6 weeks
- Plan how to ship your equipment and samples back after your stay



Friendly reminder

- Read the general T&C, and for the labs and the RV found at kingsbay.no/terms-and-conditions/
- Own T&C for field stays
- Price list at the Kings Bay site
- Lab space, time on the RV, equipment and services like operational support are first-come, first-serve basis
- Remember shipping of equipment, chemicals, and gases takes time!

Book Early!



A person wearing a helmet and goggles is in a zodiac boat on a blue lake. The background features snow-capped mountains under a blue sky with light clouds. The text is overlaid in white on the image.

Part V

Preparations, Permissions, etc.

(What you need to do before arrival)

Permissions for field activity in Ny-Ålesund

- As a rule, most field activities will require permission from The Governor of Svalbard
- Applications must be submitted through RiS
- Deadlines are:
 - 15 January for fieldwork in March, April, and May.
 - 1 March for fieldwork in June, July, and August.
 - 1 July for fieldwork in September, October, and November.
 - 1 October for fieldwork December, January, and February.
- The Governor has guidelines – available on their webpage
<https://www.sysselmesteren.no/contentassets/61617fb2660044048f9b76e56874c688/guidelines-for-researchers-in-svalbard-2025.pdf>



Photo: Ingrid Kjerstad/NPI



Instruments and installations in the field

All instrument and installations need...

- ...a permission from the Governor
- ... approval from Kings Bay if within the land-use plan of Ny-Ålesund land-use-plan area. Write to adviser@kingsbay.no
 - Provide correct information about environmental intervention/size/location/coordinates
- ...to be marked when set up in the field
- ...to be registered in the Ny-Ålesund GIS-system. Write to research.nya@npolar.no when installing an instrument in the field.
- ... to have a plan for removal.



Photo: Ingrid Kjerstad/N

Permission to borrow/carry firearms on Svalbard

- You need polar bear protection on Svalbard – in Ny-Ålesund this is a rifle and a flare gun.
- You need a permit from the police to borrow and carry firearms in Norway
 - International researchers can apply through the Governor: <https://www.sysselmesteren.no/en/weapon/>
 - Residents of Norway must apply through their local police administration office.
 - Required documentation: criminal records and proof of gun/rifle handling/training: UNIS, Kings Bay, AWI training.
- The various host institutions in Ny-Ålesund have different guidelines.



Radio frequency restrictions in Ny-Ålesund

- By law **you cannot utilize frequencies** within this range: 2-32 GHz
- This includes the use of **Wi-Fi** and **Bluetooth**
- The regulations are in place to protect measurements carried out by the Norwegian Mapping Authority



Radio frequency restrictions in Ny-Ålesund

- This means: No Bluetooth, No Wi-Fi, No microwave ovens.
- Besides phones and laptops, check your earbuds, watches, cameras, tooth brushes, ..., ..., ..., ...,
- You can use your 4G on your phone, but NO hotspot, NO Wi-Fi, NO Bluetooth.
- 900m around NMA observatory: phone must be in flight mode.
- See details on <https://nyalesundresearch.no>



Permissions to use drones in Ny-Ålesund

- The Norwegian Civil Aviation Authority administers the provisions on drones. Familiarize yourself with and follow the rules for drone flying.
- Drone flying requires exemption from 2 – 32 GHz: to be applied for at NKOM.
- Coordinate flying with the Kings Bay airport personnel within 5 km of the airport
- Due to frequency limitations drones can come into conflict with each other – **please check our calendar** to schedule and coordinate with other projects.
- <https://nyalesundresearch.no/research-and-monitoring/researchers-guide/using-air-space/>



Other permissions from Norwegian authorities

- The responsibility lies with the researcher to familiarize themselves with the applicable legislation.
- See overview of other agencies from The Svalbard Science Forum, consult with the Governor

Experience from Ny-Å RS:

- You might need permission from The Norwegian Food Safety Authority (animal experiments, handling, sampling etc.)
- The Norwegian Coastal Administration (set up of instruments in the fjord)
- +++++





Part VI

What to Expect when in Ny-Ålesund

Arrival in Ny-Ålesund

- General information in the reception upon arrival
- Detailed in-brief by your host including practical information regarding daily life and activity in Ny-Ålesund, such as mealtimes, gym etc.



Arrival in Ny-Ålesund

Code of Conduct



When in Ny-Ålesund

- Note that there will be limited support available during weekends and holidays
- **Kings Bay staff operate Monday-Friday 08:00-16:00**
- Kings Bay staff on weekend duty – reduced support and extra costs for weekends for for instance time using Teisten
- *Plan ahead for any assistance or services you might need*

Public holidays Norway 2026

- 01.05 – Labour Day
- 14.05 – Ascension Day
- 17.05 – Norwegian Constitution Day
- 24.05 – Pentecost
- 25.05 – Pentecost
- Christmas: week 52 (24.12 - 26.12)



Contribute with a science talk when in Ny-Ålesund

- Share your project and your plans!
- Organized every week on Tuesday after dinner
- Participate in discussions
- Good opportunity to get to know other projects in Ny-Ålesund!



Part VII Safety



Safety in Ny-Ålesund

24/7 Kings Bay Watchman on Duty

- First point of contact for emergencies or urgent assistance outside regular working hours

Medical Assistance:

- **Nurse** on-site. Handles non-critical medical needs and have a duty of confidentiality
- Limited selection of mostly non-prescription medication



EMERGENCY PHONE

Use in case of



- **POLAR BEAR**

If you see a polar bear inside Ny-Ålesund or close to town

- **FIRE / WATER LEAKAGE**

If you detect a fire, water leakage or other situations that can develop dangerous/ harmful incidents to people or the environment

- **MEDICAL EMERGENCY / ACCIDENT**

- **WATCHMAN**

+47 79 02 72 38 / 9 on landline / Radio "Watchman"

- **NURSE**

+47 79 02 72 74 / radio «Nurse» or «Sykepleier» (office hours)

- **SYSSELMESTEREN – THE POLICE**

+47 79 02 12 22

- **NOWEGIAN MEDICAL EMERGENCY AUTHORITY**

Dial 113

This info is available in all buildings!

MEDICAL EMERGENCY HELP

1. Alert

Watchman call +47 79 02 72 38 / Call 9 on landline / Radio "Watchman" in Ny-Ålesund. Watchman will alert medical emergency authorities (113) and medical personnel.

2. Start life saving first aid

1. Check ABC - Airways, Breathing, Circulation
2. Start CPR - Cardiopulmonary Resuscitation
3. Get assistance to collect AED – Automated External Defibrillator

AED locations:



- Servicebygget
- Samfunnshuset



NON CRITICAL MEDICAL ASSISTANCE

Call Nurse +47 79 02 72 74 or radio «Nurse» / «Sykepleier» - outside office hours call Watchman + 47 79 02 72 38 / Radio «Watchman»



Download the 113 application



Field Safety

- *The Governor is responsible for planning, leading and coordinating the rescue service for Svalbard – **Kings Bay watchman is only responsible inside the town boundaries within the frame of their means** and not responsible for rescue at sea for instance*
- If you have an emergency in field the Governor is the point of contact.
- **All field teams are responsible for their own safety in the field if not otherwise is planned with your hosting institution.**



Photo: Svalbard Folkehøyskole

Field Safety

- A documented risk assessment is mandatory for all participants going out in the field.
- Be aware of insurance requirements in some areas for your fieldwork.
- **All field teams are responsible for their own safety in the field if not otherwise is planned with your hosting institution.**



Thank you for your participation!

This presentation with relevant links will be sent out to participants after this meeting.

Stay in touch with Ny-Ålesund Research Station in the following ways:

- LinkedIn: <https://www.linkedin.com/company/ny-alesund-research-station/>
- Sign up for our newsletters: <https://nyalesundresearch.no/newsletter/>
- <https://nyalesundresearch.no>

For questions, contact Fieke Rader – Research coordinator – research.nya@npolar.no

For questions about research infrastructure, contact Hedda Andersen – Advisor market and research – research@kingsbay.no



Questions?

